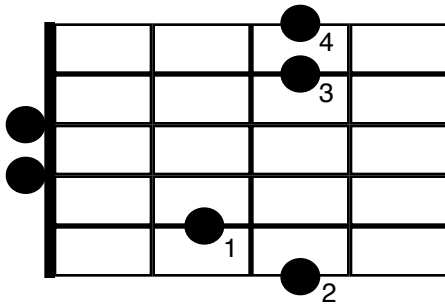


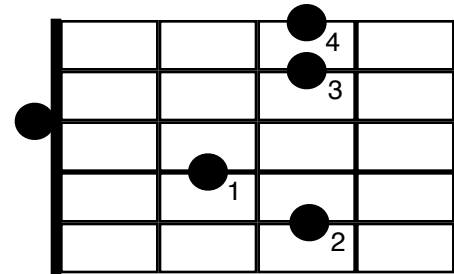
# Common Tone Chords

A common tone is a note that stay the same between two chords. Here are four chords that have two notes in common (the notes on the 1st and 2nd strings, 3rd fret). Holding your fingers on these notes during chord switches makes them sound better by allowing the notes to ring. Also, keeping your fingers down reduces the chance for mistakes.

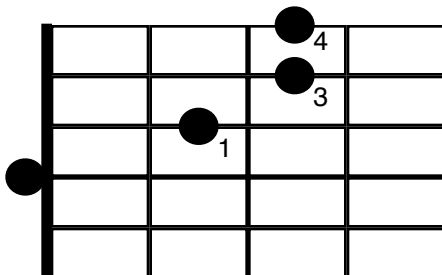
**G**



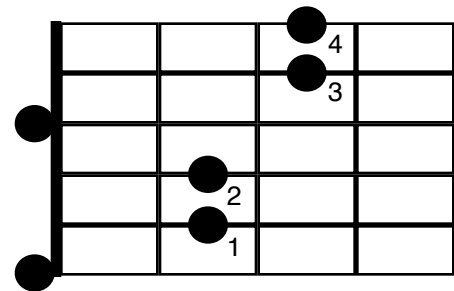
**Cadd9**



**Dsus4**



**Em7**



Just as with the A, D and E chords from Amazing Grace; learn to play cleanly, memorize then practice switching.

For additional practice combine these chords with A, D and E. Try playing 4 beat measures; 1 chord per measure, 1 strum per beat.